



PIONEERCONSS

STRUCTURAL STRENGTHENING & PROTECTIVE COATINGS PVT LTD

AN ISO 9001 : 2015 CERTIFIED COMPANY

... SINGLE SOURCE RESPONSIBILITY



- SPECIALIZED WATERPROOFING SYSTEMS
- CIVIL & STRUCTURAL FABRICATION
- DIAMOND SAW CUTTING IN SLAB



PIONEERCONSS

STRUCTURAL STRENGTHENING & PROTECTIVE COATINGS PVT LTD
AN ISO 9001 : 2015 CERTIFIED COMPANY

ABOUT US

Pioneer Consolidated Constructors Private Limited, an ISO 9001 certified company, established in 2009 by a Entrepreneur and Civil Engineer having Registered head office in Mumbai-India. As a leader in concrete repair and restoration, has earned its success through providing innovative and cost-efficient solutions to a broad spectrum of sectors ranging from residential and commercial buildings to industrial and institutional facilities across the country spanning since last one decade. Pioneer conss having its Branch offices in key industrial city state Gujarat and Goa, therefore having pan India presence.

At the heart of our company, lies the knowledge and expertise of our team.

WATERPROOFING, CONCRETE AND STONE PRESERVATION

Waterproofing is a very complexed subject and need years of experience handling concrete structure, understanding the structure design, environment conditions, weathering conditions, in-depth knowledge of construction chemicals etc. We as a team are handling waterproofing jobs for nearly 15 years. Our team of Engineers, supervisors, workers fully trained are capable of handling jobs of most critical nature. We do the planning of waterproofing jobs after extensive study of site conditions for leakage, seepage and dampness using advance equipment like moisture detector and thermography camera. Selection of waterproofing chemicals is done taking help of Expert Chemical Engineer in this field and right methodology is followed to get best possible results. In this particulars field we have got best of the results in most challenging conditions. The heritage structures, temples, churches etc. can get a fresh look after cleaning the affected surface with high power steam and washed using high pressure water jet and Chemically treated to maintained fresh look for many years without getting affected with extreme weathering conditions, atmospheric and industrial pollution, UV etc.

The list of our valued clientele is an authentic credential. Our commitment in getting the highest standards of quality and safety implementation followed by strict time bound completion schedule, are the essence of our core strength under any circumstances.

Pioneer Conss has passion for innovation and technology up-gradation has derived us towards international collaboration with western country's expert in the industries to bring best of the materials, equipment and machinery and systems to the highest standard.

Our consortium of professionals consists of Material scientists, Concrete Technologists, Corrosion protection experts and structural engineers having reputation and expertise recognized by world class fraternity, hence achieving the best results delivered to our valued client.



OUR MISSION

Highest standard of quality, time-bound performance and customer satisfaction.



OUR VISSION

To be the best in our core expertise hence better than the biggest.



CORE VALUE

To our valued customer and the society as whole.... Loyalty, honesty, trust, integrity, accountability, respect, value-centric.

SPECIALIZED WATERPROOFING

- EXPANSION JOINT WORK
- WATERPROOFING WITH LIGHT WEIGHT BLOCK
- WATERPROOFING OF SWIMMING POOL
- WATERPROOFING OF SWIMMING POOL & TERRACE
- WATERPROOFING USING G.I EMBEDDED IN IPS FINISH
- WATERPROOFING WITH PU COATING AND CHINA MOSSAIC FINISH.
- WATERPROOFING WITH PU COATING AND SCREED
- WATERPROOFING WITH LIGHT WEIGHT AAC BLOCK

CIVIL & STRUCTURAL FABRICATION

- WAREHOUSE CIVIL WORK WITH DRAINAGE UPGRADATION
- DRAINAGE UPGRADATION IN INDUSTRIAL CHEMICAL PLANT
- TRIMIX ROAD WORK IN CEMENT PLANT
- INDUSTRIAL BUILDING EXTENSION WORK WITH MS ROOFING
- INDUSTRIAL BUILDING WAREHOUSE MS ROOFING
- STEEL FABRICATION WORK TO CLOSE THE OPENING
- INDUSTRIAL CIVIL WORK
- ARCH BEAM WITH MICRO CONCRETE
- INDUSTRIAL CIVIL WORK-PEDESTAL FOUNDATION WORK FOR ERECTION MS STRUCTURE
- LIFT RCC WORK WITH STRENGTHENING
- INDUSTRIAL BUILDING EXTENSION CONSTRUCTION WORK

DIAMOND SAW CUTTING IN SLAB



SPECIALIZED WATERPROOFING





Various Expansion Joint Treatment.



Waterproofing
With Insulation
Using Light
Weight Blocks.





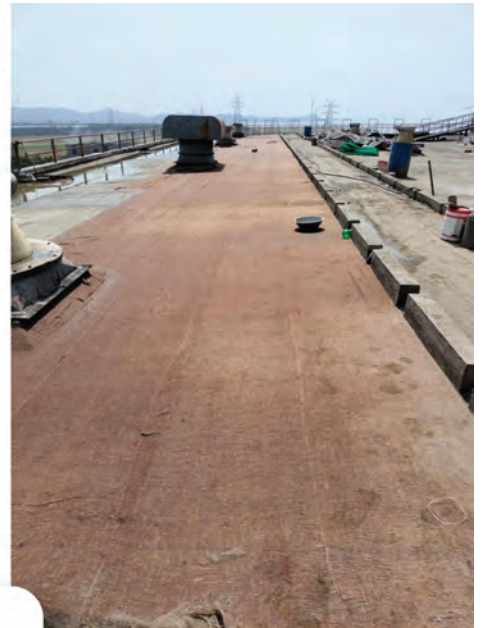
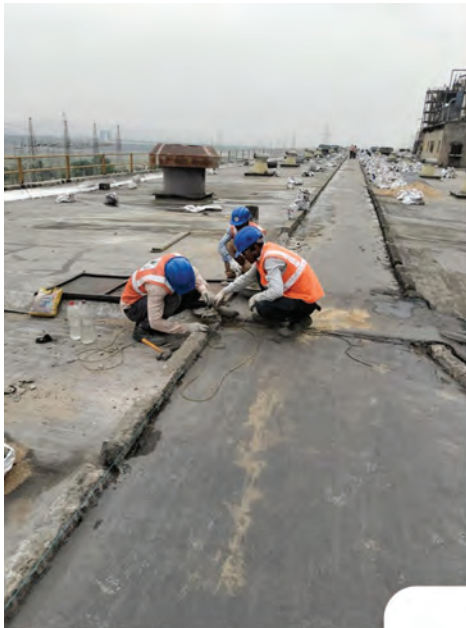
Waterproofing Using High
Performance Coating
For Swimming Pool.



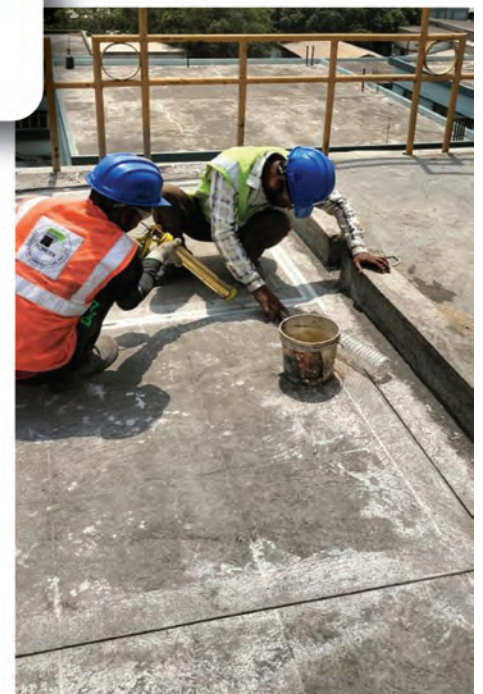
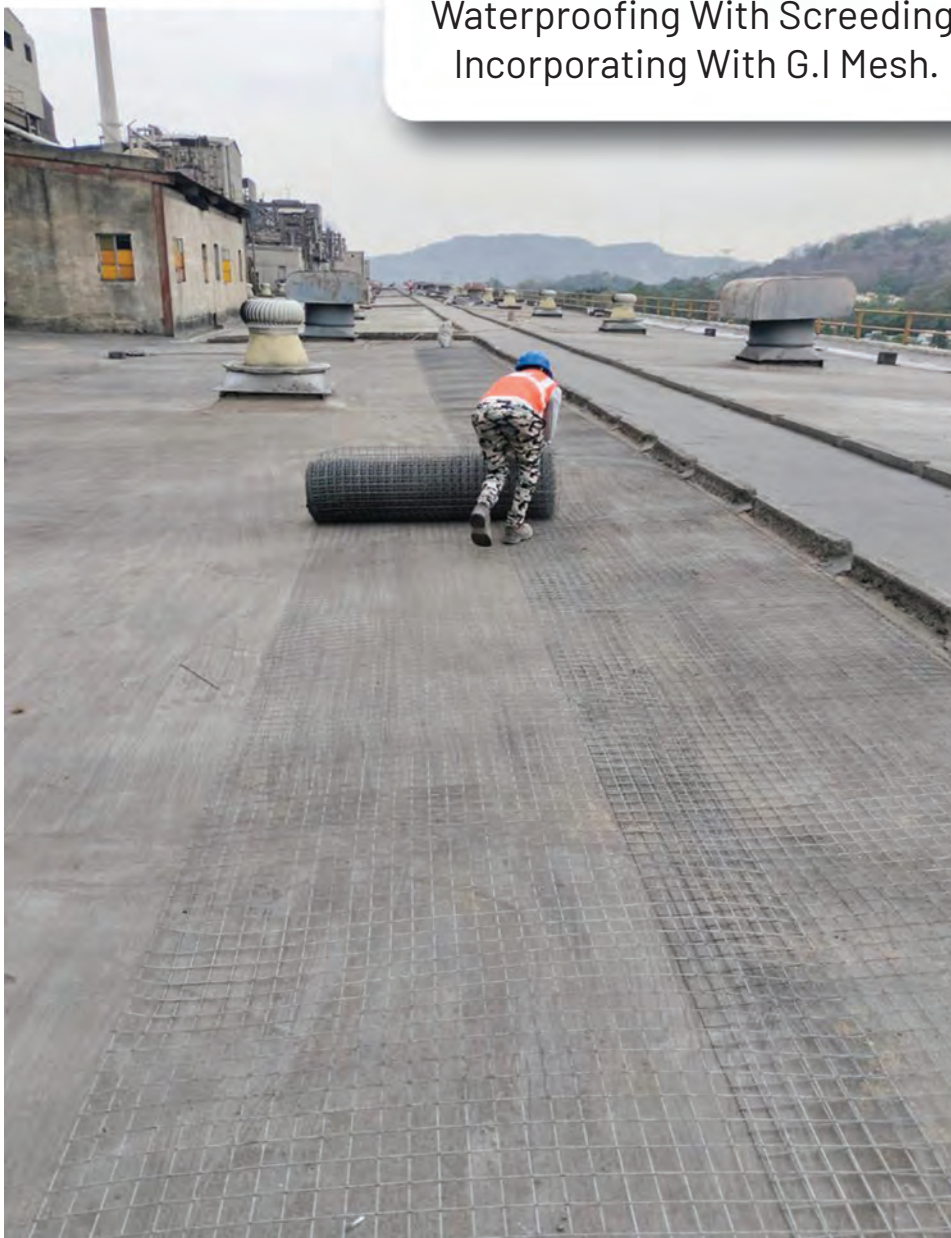


Waterproofing With Insulation
Using Extruded Sheets





Waterproofing With Screeding
Incorporating With G.I Mesh.





Waterproofing Under China Mosaic With Multiple Layer Of Coating's Including PU.



High Performance Waterproofing
Coating For Terrace.



Aliphatic Pu Waterproofing
Coating Incorporating
With Geotextile.





CIVIL & STRUCTURAL FABRICATION





Warehouse
Civil Work With
Trimix Floor And
Façade Work.



Construct External Storm Water
Drainage Upgradation Work In RCC
With FRP Grating And
Concrete Cover Installation.



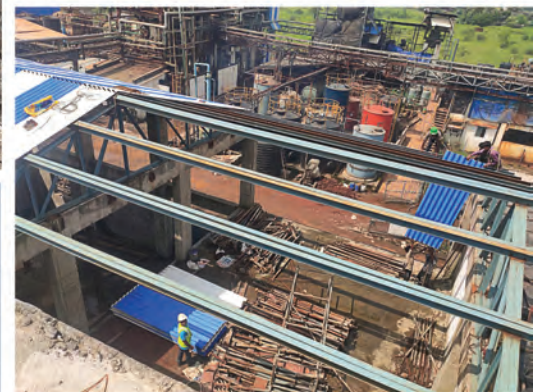
Trimix Road In Industrial
Area With Floor Hardener
Coating.





Extension Of Industrial
Building With PEB Shed





Warehouse Rcc Work
With MS Structures
And Covering Roof Shed



Closure Of Opening With Ms Steel Fabrication Work
Finished With Anti-Corrosive Coating.





RCC Structure And External Faced Work





Bar Counter Curve Beam Casted
Using Micro Concrete To Achieve Required
Architectural Purpose.





Foundation Work To Erect Ms Structure



Excavation And Civil Work





Foundation Work To Support MS Columns And Structural Member Of Ramp Connecting From Ground To First Floor.





DIAMOND SAW CUTTING IN SLAB





Diamond Cutting Done For Lift Shaft
And HVAC Shaft



OUR AFFILIATION & CERTIFICATES OF LIFE MEMBERSHIP OF LEADING PROFESSIONAL INSTITUTE



INDIAN INSTITUTION OF BRIDGE ENGINEERS



INDIAN CONCRETE INSTITUTE



INDIAN SOCIETY OF STRUCTURAL ENGINEERS



AMERICAN CONCRETE INSTITUTE



INDIAN GREEN BUILDING COUNCIL



ISO 9001:2015



ISO 14001:2015



ISO 45001:2018





REGD. | PIONEER CONSOLIDATED
OFFICE | CONSTRUCTORS PVT. LTD.
241, CITI CENTER, S. V. ROAD,
GOREGAON (W), MUMBAI-400 062.
MAHARASHTRA, INDIA.

☎ : + 91-9 3 7 2 0 7 3 6 8 7

☎ : + 91-9 8 2 0 2 9 5 2 6 4

✉ : contact@pioneerconss.com



www.pioneerconss.com

